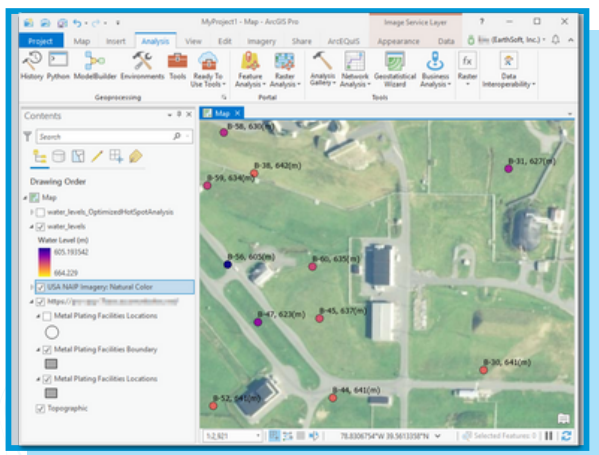




EQuls is interoperable with other software with our REST API. An Application Programming Interface (API) allows two systems to communicate with one another. EarthSoft uses REST (Representational State Transfer) API to receive or send information from an EQuls Enterprise URL to perform specific tasks. The EQuls REST API includes an implementation of OData (Open Data Protocol) that allows users to interact directly with tables, columns, and records in the EQuls Schema.

Leverage the power of EQuls data transfer with our REST API license. EQuls users assigned the REST API role can also connect to an EQuls Enterprise site with Microsoft Power BI or ArcGIS Pro Desktop.



### ArcEQuls

ArcEQuls is an add-in for Esri ArcGIS Pro Desktop to easily view and analyze EQuls data by directly connecting to an EQuls Enterprise site.

Map and analyze EQuls environmental and geotechnical data in real time with the power of ArcGIS Pro tools. ArcEQuls users do not need to have EQuls Professional installed to use the ArcEQuls add-in.



### Power BI

Directly and easily access EQuls data quickly and securely.

View analytics in advanced ways in real-time. Share EQuls information across organizations easily and efficiently with Power BI collaboration tools.

Microsoft  
Partner

