

Workflow Automation and Dashboards

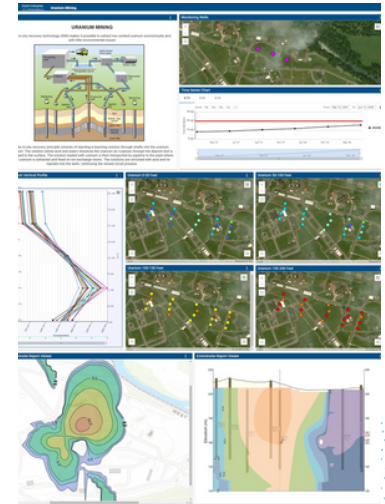
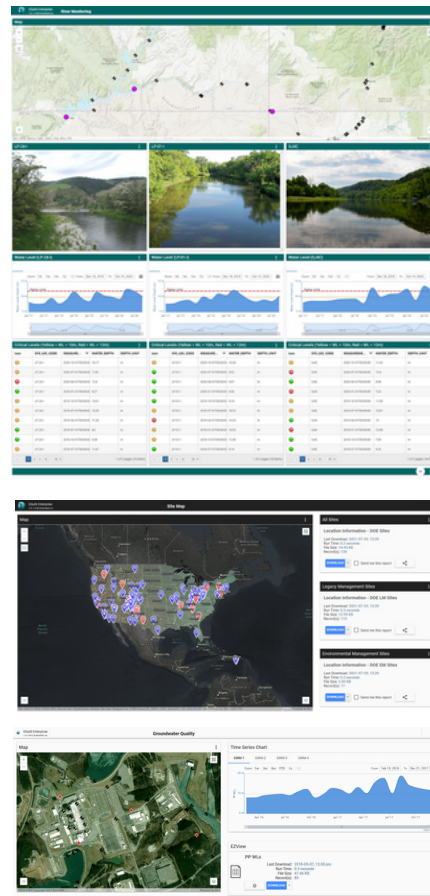


Enterprise provides advanced workflow automation for efficient and reliable **data loading, data quality checks, reporting, and graphics/visualization** through web browsers.

Enterprise improves decision support with user-defined dashboards comprised of multiple widgets for maximum customization, integration, and query-building tools.

EQulS Enterprise is part of the EQulS **environmental and geotechnical data management workflow.**

Web dashboards and integration with tools like **Microsoft Power BI** and **Esri** software provides decision and data analysis, graphics and visualizations capabilities unique to the environmental industry.



Features and Benefits

- Design dashboards to visualize and understand data using a variety of widgets for charts, graphs, maps, tables, images and text
- Map Widgets with Esri's ArcGIS JavaScript API
- Upload and verify data using built-in checkers (Enterprise EDP)
- Selectable upload methods (Web, Email, FTP)
- REST API web services
- Powerful and flexible permission structure that lets administrators configure system security according to specific needs
- Automatically generate email alerts using EQulS Information Agents (EIAs) triggered by:
 1. New data upload
 2. Calendar frequency (daily, weekly, monthly...)
 3. Action level exceedances
- Dashboards available in multiple languages: English, Spanish, French, Portuguese, German



Enterprise EDP

- Check submitted data against business rules of selected EDD format, reference values, and data in EQulS.
- Data passing EDP automatically loads to EQulS and available for reporting.
- Data failing EDP automatically notifies data provider and others of errors as appropriate.

Workflow Automation

- Provides advanced and flexible workflow automation for efficient and reliable data loading via selectable upload options.
- Automate processing of EDDs and reports.
- Automatically update dashboard data, reports, maps, graphics, and visualizations.

Roles and Permissions

- Configure system security and user roles with different levels of access to EQulS applications, data, and file for client-specific requirements.
- Administrators can add or remove users, create and assign roles for groups of users, and assign permissions to users and roles.

Dashboards

- Improve decision support with user-defined dashboards comprised of multiple widgets (charts, maps, tables, text, images, and other options).
- Create configurable dashboards with project-specific widgets for endless reporting flexibility.
- Design dashboards for multiple facilities.

Notices and Alerts

- EQulS Information Agents (EIAs) are auto-generated reports triggered by certain events such as specified date/time, action level exceedance, or new data arriving to EQulS).
- View in widgets or email to designated recipients.
- Use EIA reports as data sources in widgets and Microsoft Power BI.

REST API (Licensed Separately)

- EQulS Enterprise uses an open REST API that provides clients more flexibility with how they consume their EQulS data.
- EQulS is interoperable with other software such as Microsoft Power BI, ArcGIS Pro, and ArcGIS Online.

All EQulS workflows require EQulS Schemas in Microsoft SQL Server. The EQulS Schema is the licensed data structure, rules, and central data repository supporting all EQulS software products and workflow services. The Schemas can be hosted on your server or by EarthSoft in the cloud. EQulS Enterprise product levels (Basic and Premium) combine Enterprise automation and workflows with specific EQulS Schemas.

Microsoft
Partner

